



Make your own Pinecone Pals



Spaxton the Sheep

You will need:

- *Pine cones*
- *String*
- *Small twigs*
- *Googly eyes*
- *Scrap paper*
- *Brush*
- *Glue*
- *Paint*
- *Scissors*
- *Leaf*





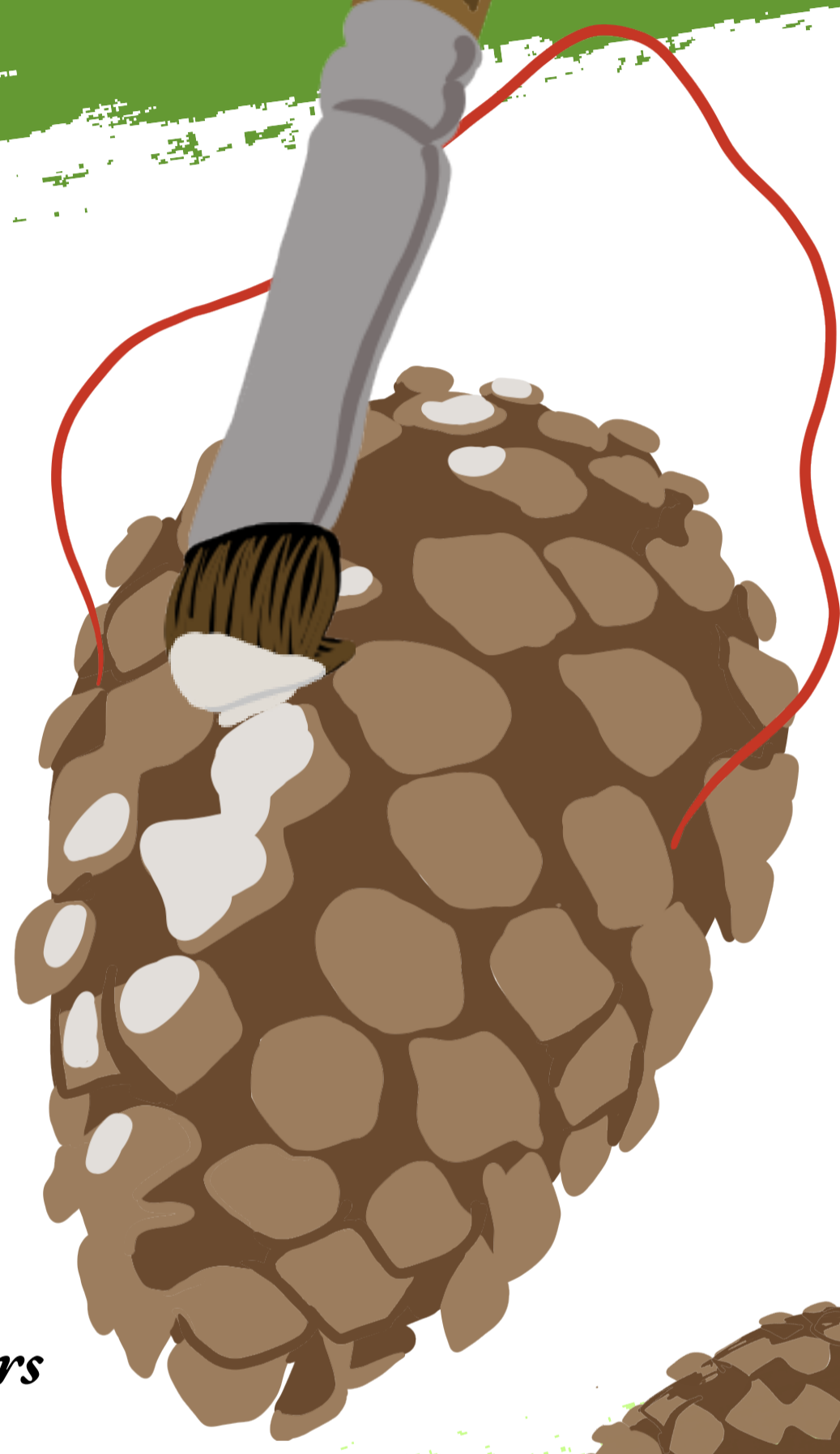
Make your own Pinecone Pals



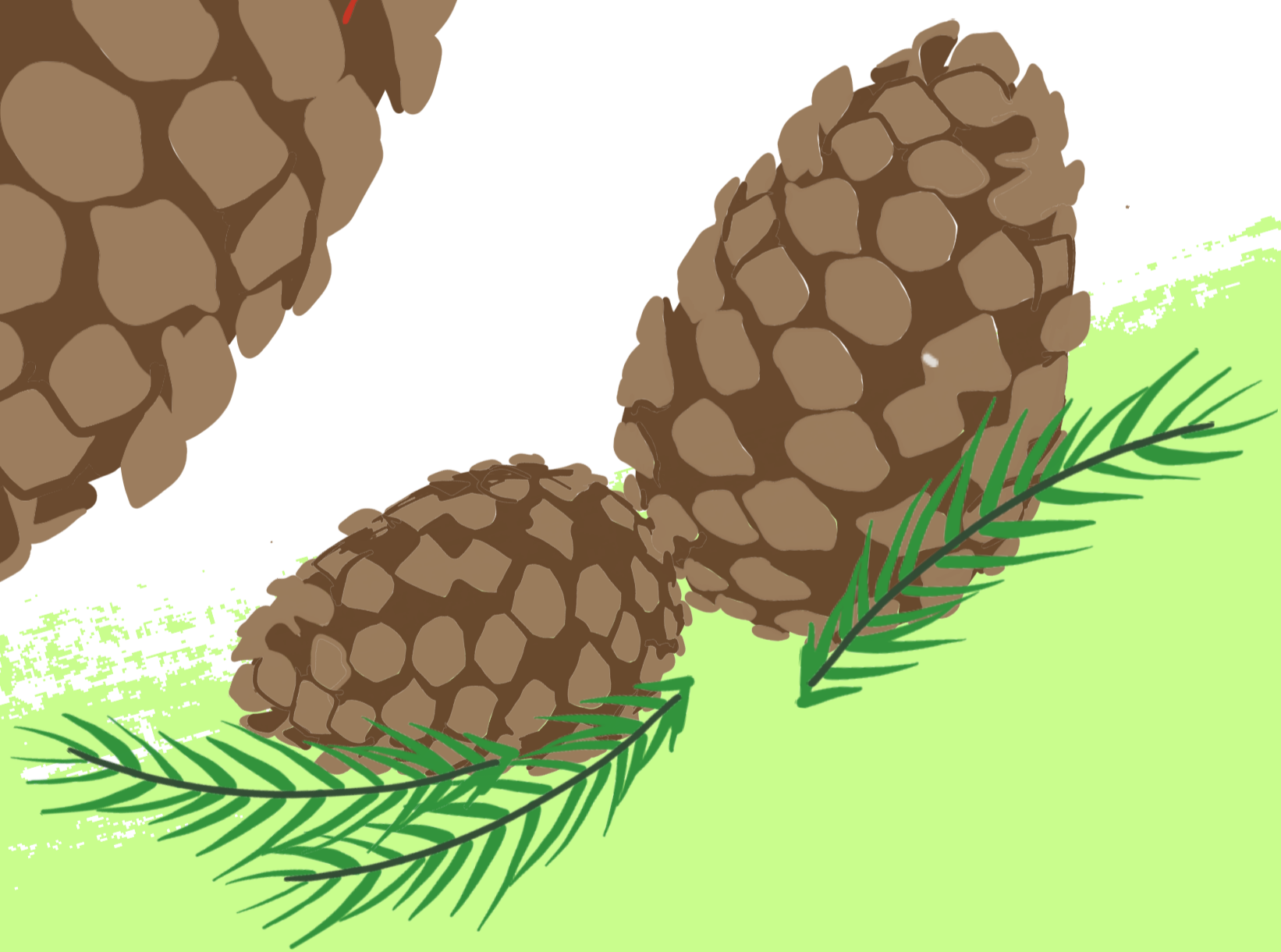
2.

Top tips:

- *Don't paint between the cracks. Shadows give it texture, like wool.*
- *Less is more! Pine cones don't like being too wet, so use thinner layers of paint and it will dry quicker.*



Paint your pine cone white. Use a brush and paint with the grain, from bottom to top!





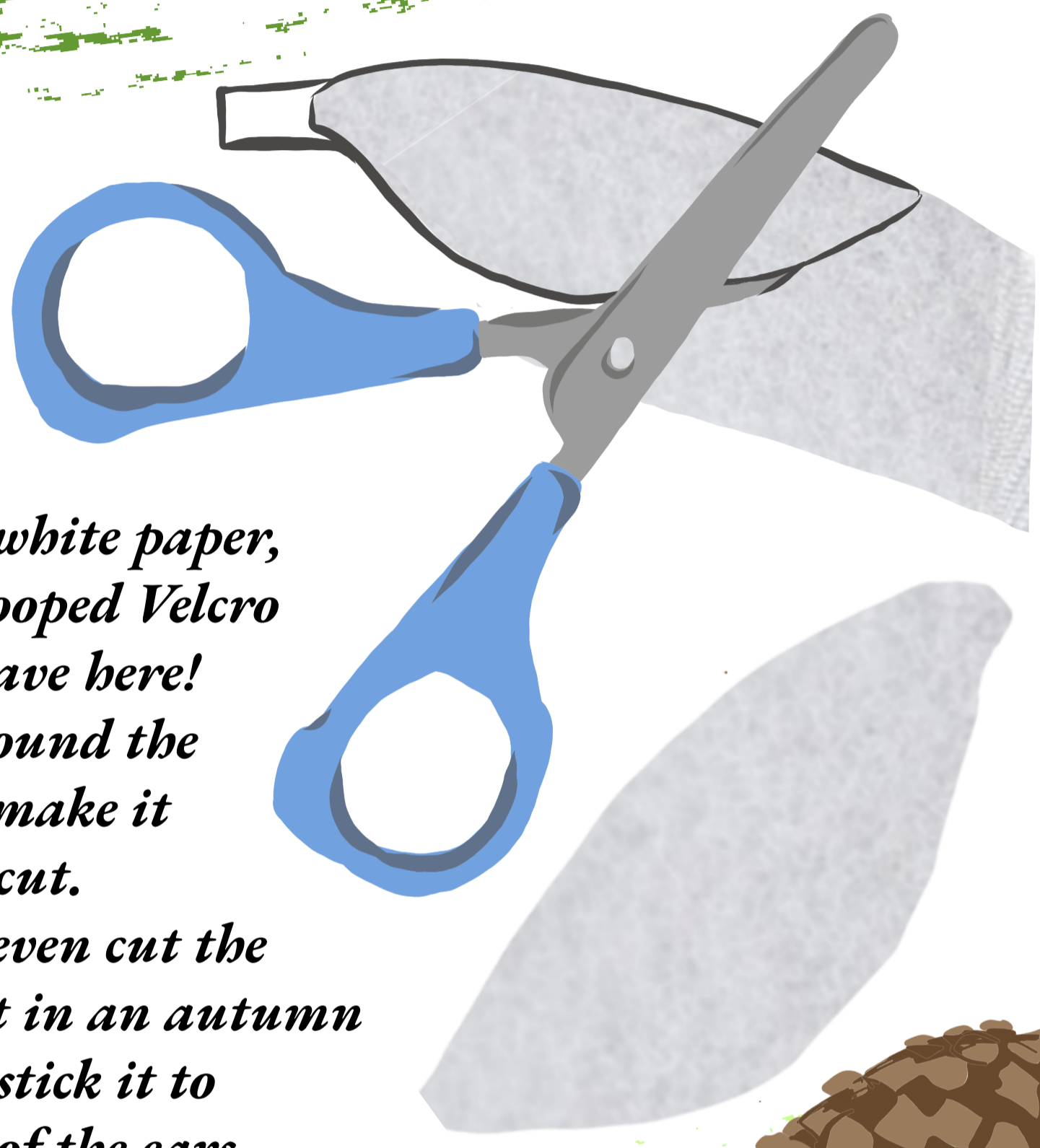
Make your own Pinecone Pals



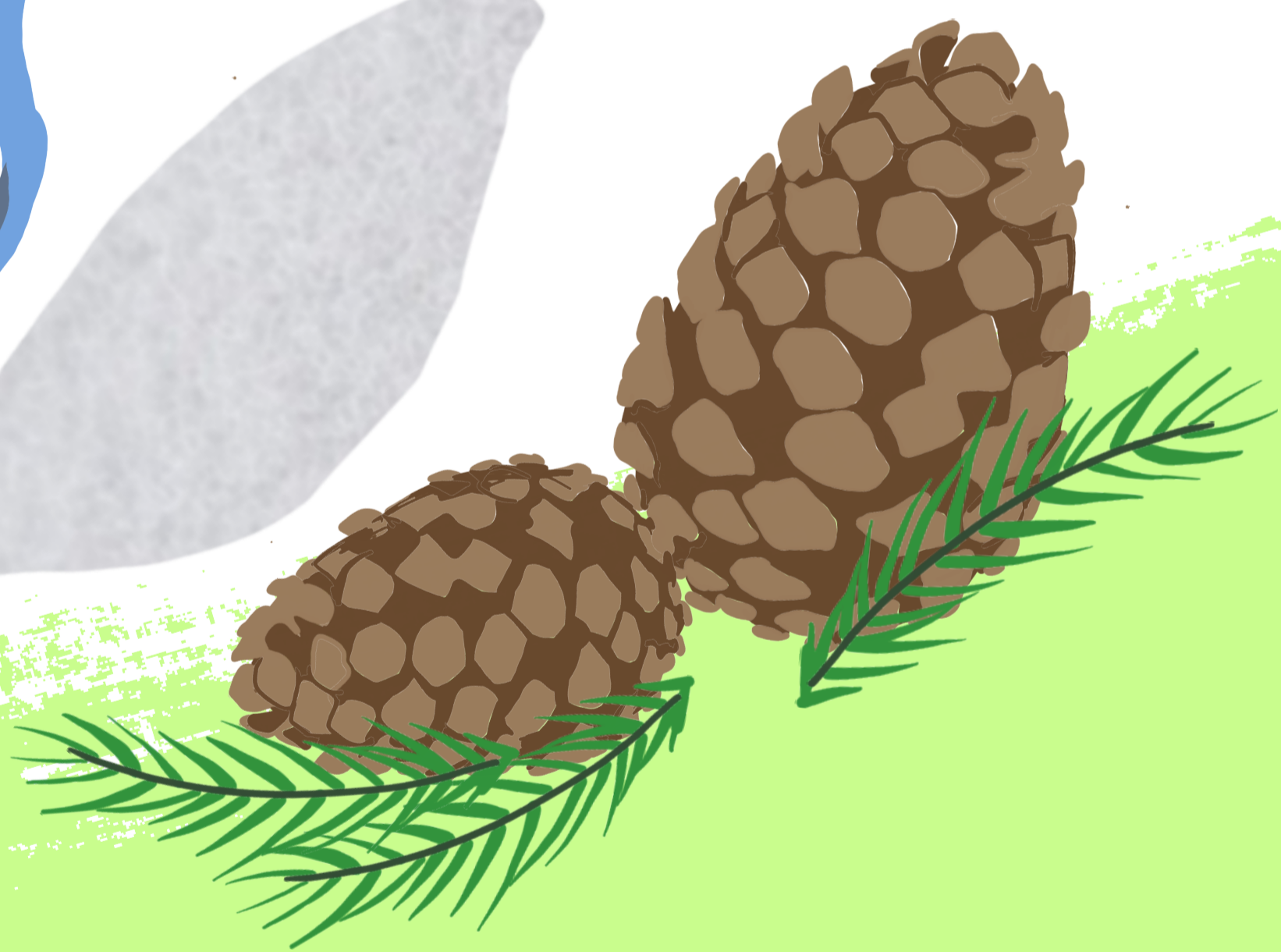
3.

Top tips:

- *Use felt, white paper, or even looped Velcro like we have here!*
- *Draw around the shape to make it easier to cut.*
- *You can even cut the shape out in an autumn leaf and stick it to the back of the ears to give it more texture.*



Cut the ears out using scissors. Remember to leave a tab for the glue as these will be inserted into the cone.





Make your own Pinecone Pals

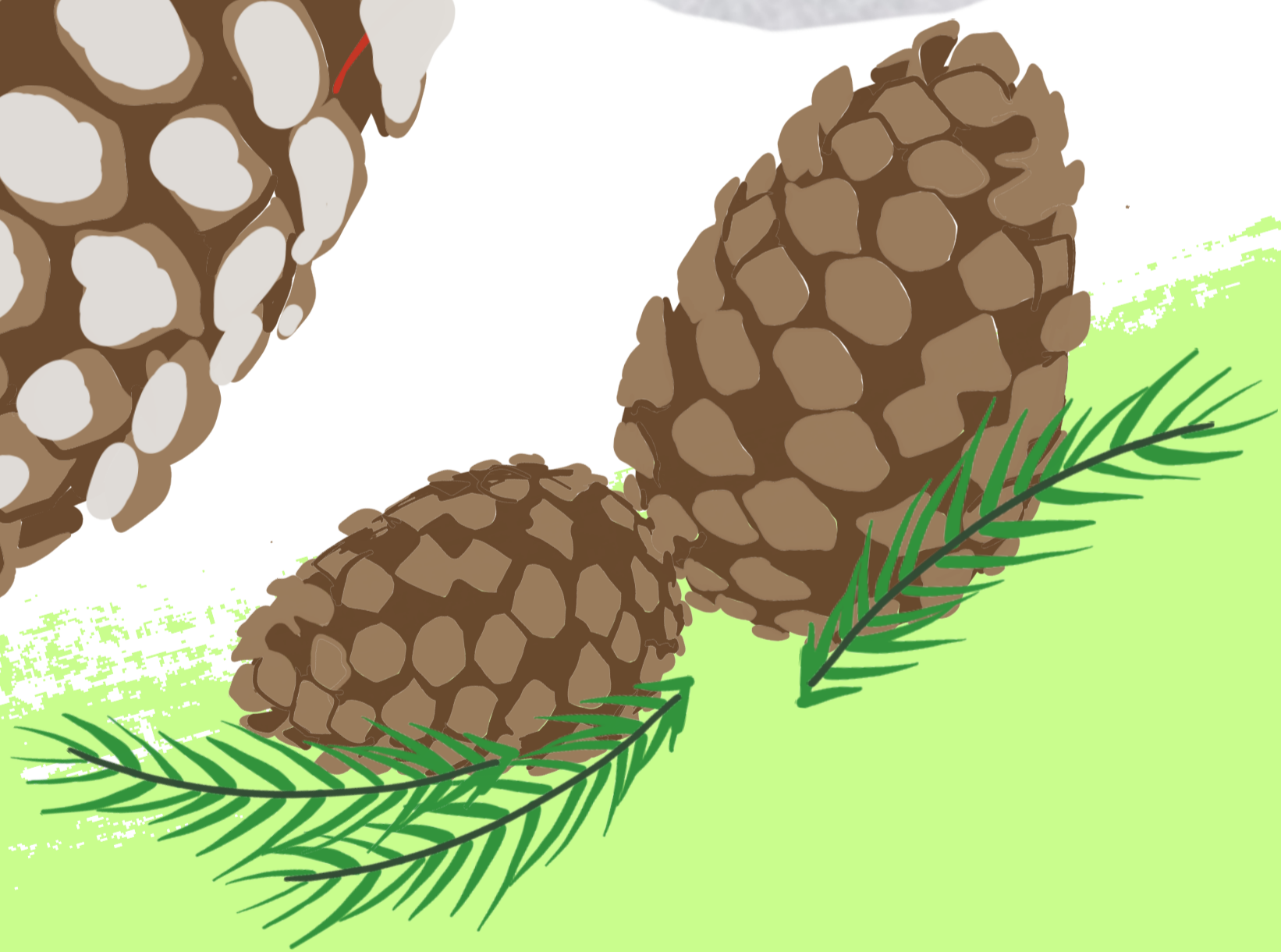


Glue the tabs of the ears and slide them into the cone.

4.

Top tips:

- *Fit the tab under the cone by lifting the edge away gently.*
- *Fix the ears at slightly different angles to give it more character.*
- *Press and hold the ears in place whilst the glue dries.*





Make your own Pinecone Pals



Fix the eyes to the cone once the paint is dry.

5.

Top tips:

- *Practice where you want the eyes to go before you glue them down.*
- *Place the eyes lower down the cone for a more cute appearance!*





Make your own Pinecone Pals

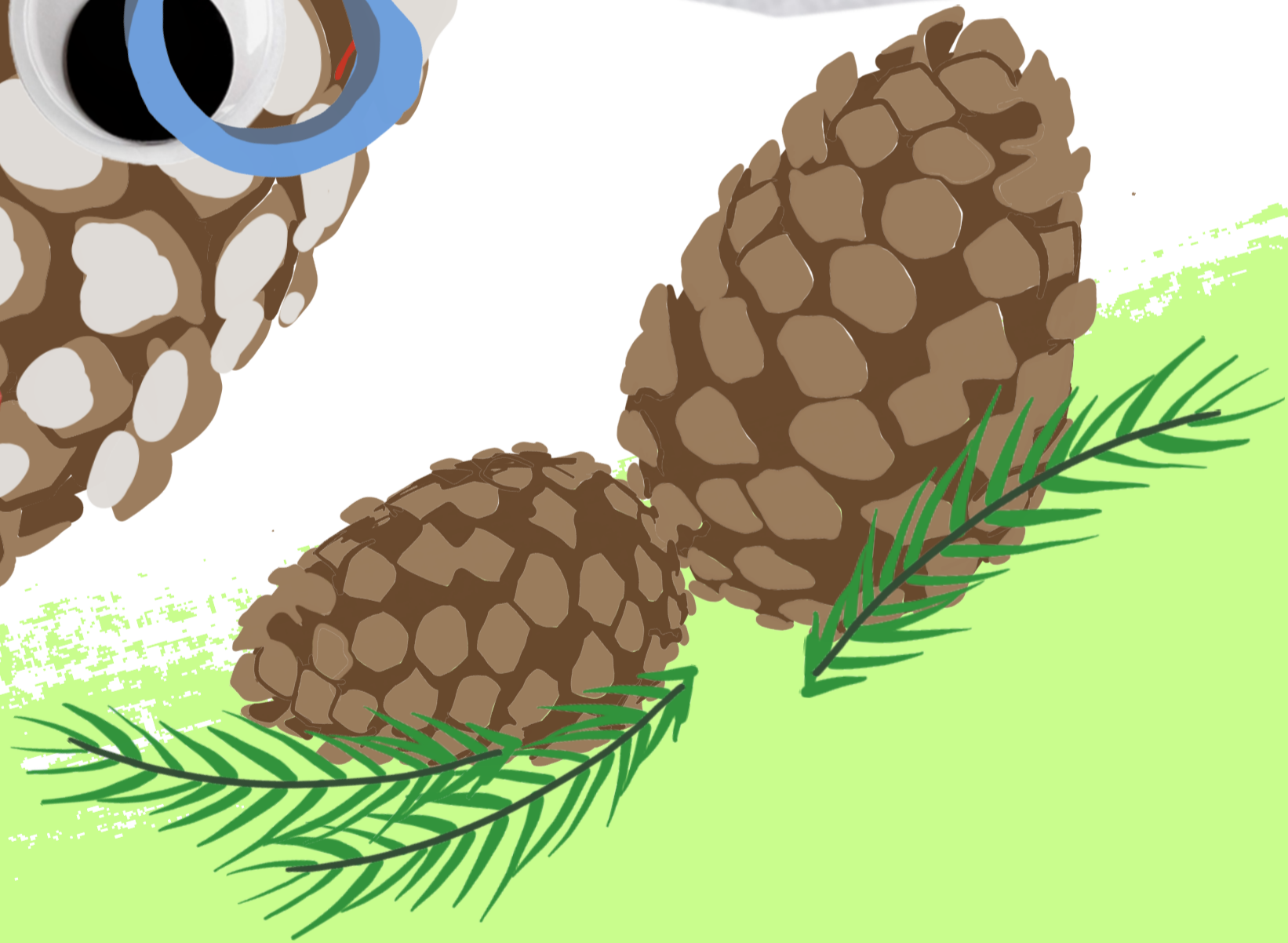


Cut off the tip from the leaf to make the nose.

6.

Top tips:

- *If your leaf is quite thin, back it with paper to give it strength.*
- *Use the centre line of the leaf as a guide when glueing it down.*





Make your own Pinecone Pals



Try adding extra features and funny accessories.

7.

Top tips:

- *Paint a small twig green and insert it into the mouth to look like grass.*
- *Add wool to the head for added character.*





Make your own Pinecone Pals



Share your creations with us!

*Share on social with #PineconePals
Or email us* and we'll share the best ideas
for others to enjoy! qlps@somerset.gov.uk*

**By emailing us you are opting-in to receive updates from the QLPS. Your information will not be shared with anyone outside our organisation.
For full privacy policy see: quantockhills.com/cookie-policy*



Reimagining the Manor

